



LAKESIDE

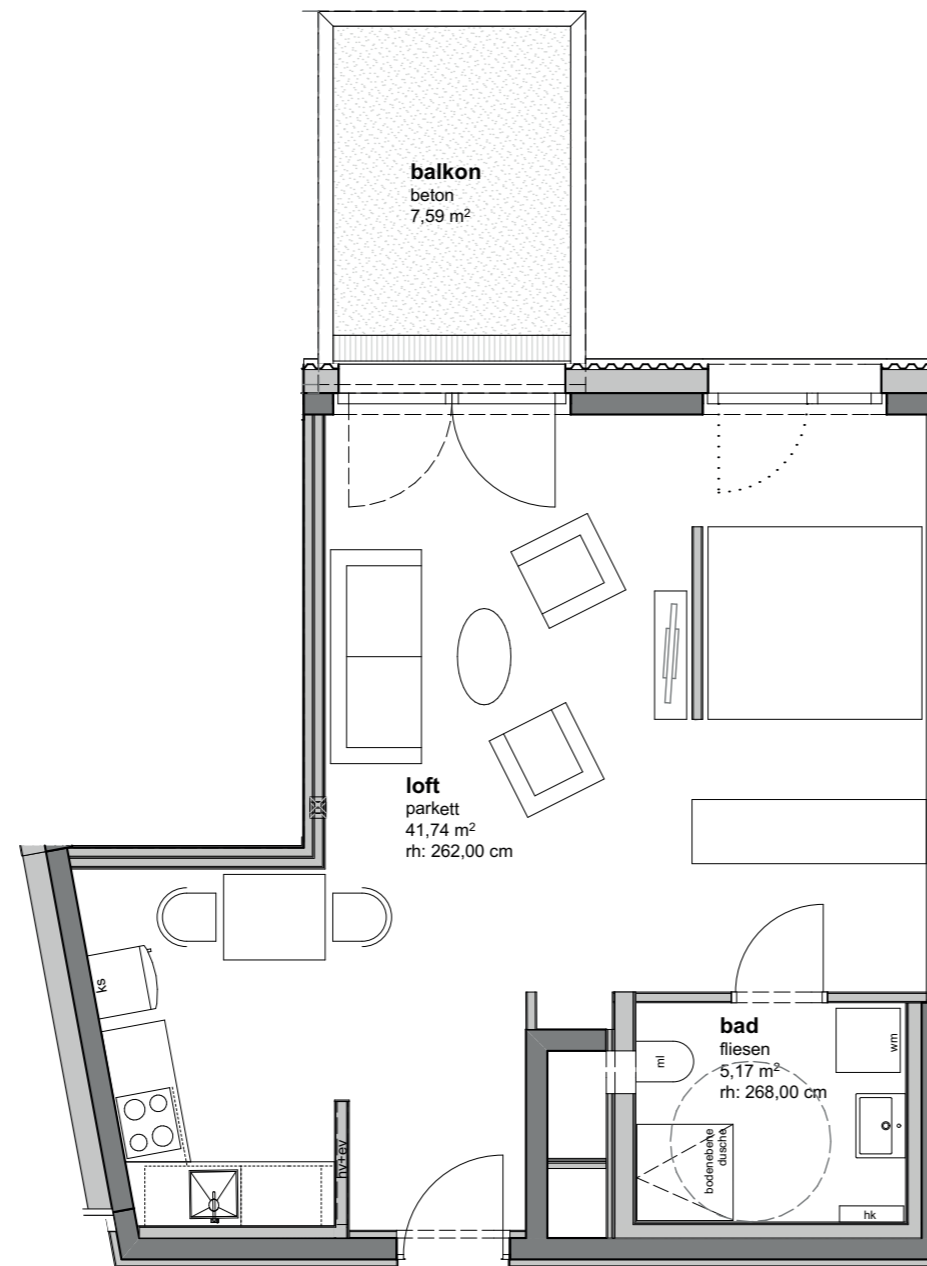
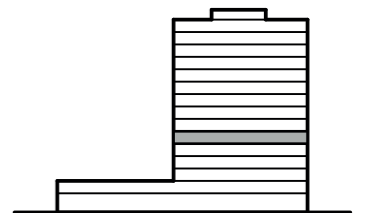
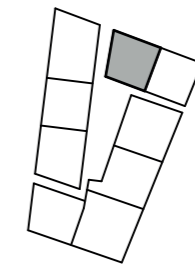
**TOP 42**

**5.OG**

**TYP A**

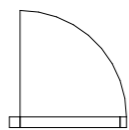
**wohnräume  
balkon**

**46,91 m<sup>2</sup>  
7,59 m<sup>2</sup>**

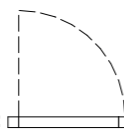


legende fensteröffnungen

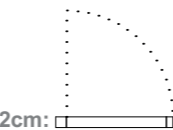
fenstertür  
gehflügel:



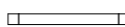
fenstertür  
stehflügel:



fenster  
fph= 112cm:



fix-  
verglasung:



einrichtungsvorschlag nicht vertragsgrundlage



m 1|100

26.03.2019