



LAKESIDE

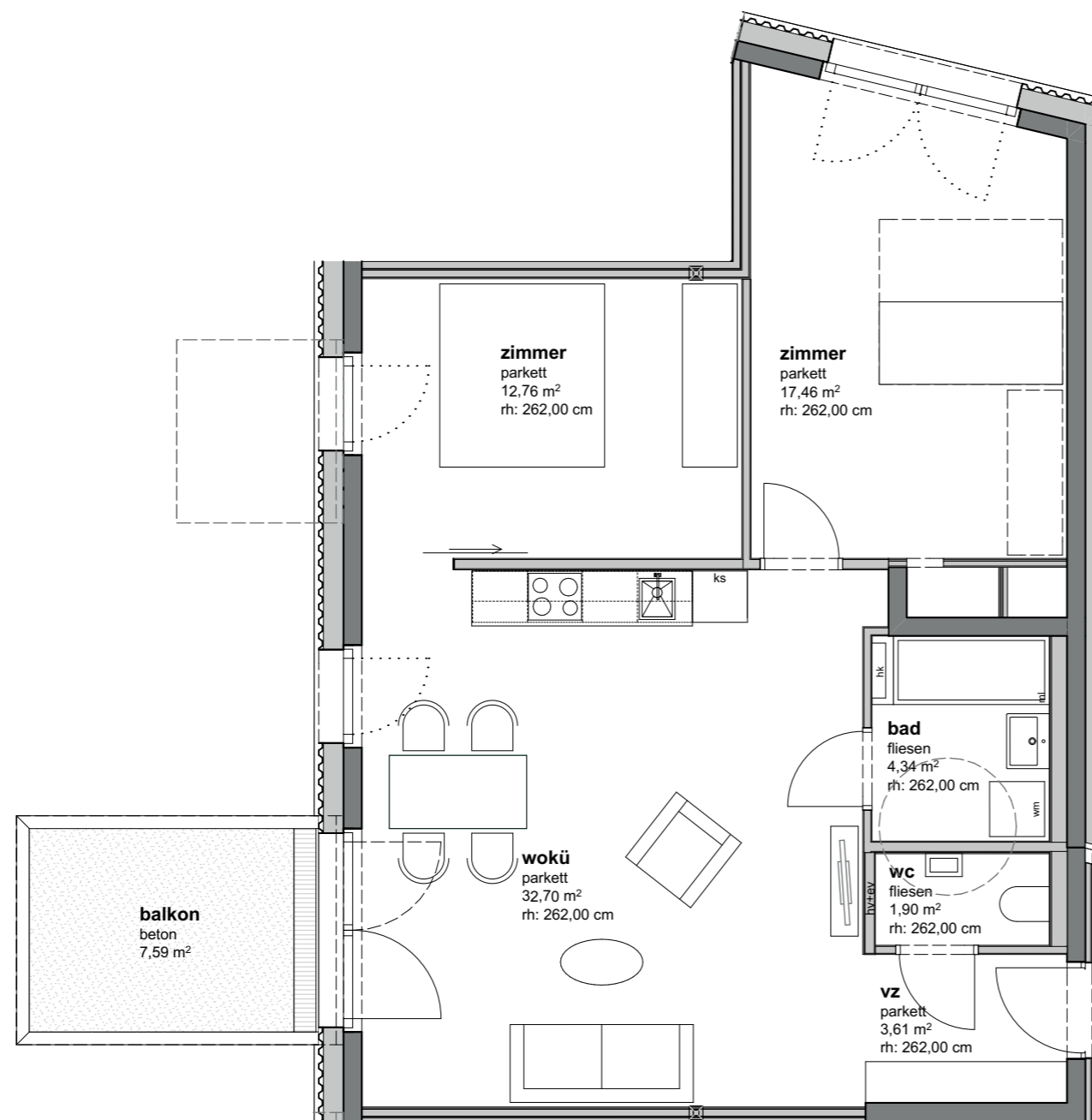
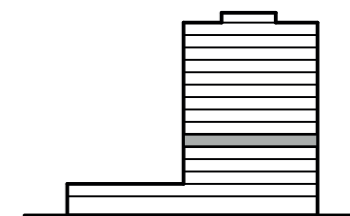
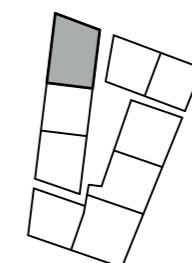
TOP 50

5.OG

TYP C

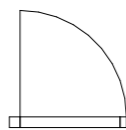
wohrräume  
balkon

72,77 m<sup>2</sup>  
7,59 m<sup>2</sup>

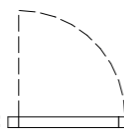


legende fensteröffnungen

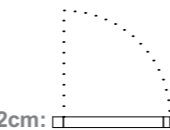
fenstertür  
gehflügel:



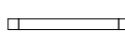
fenstertür  
stehflügel:



fenster  
fph= 112cm:



fix-  
verglasung:



einrichtungsvorschlag nicht vertragsgrundlage



m 1|100

26.03.2019